



**KBEE 2019**  
BANGKOK  
Korea Brand & Entertainment Expo



# KOREA & BRAND & ENTERTAINMENT EXPO

*Bangkok*

**2019.6.7<sup>FRI</sup> - 6.8<sup>SAT</sup>**

**B2B** | Centara Grand Convention Hall A1  
**B2C** | Siam Paragon, Royal Paragon Hall 1, 2, 3

Song Ji Hyo

WINNER



Hosted By



Ministry of Trade,  
Industry and Energy



Ministry of Culture, Sports  
and Tourism



Ministry of Health  
and Welfare

Organized by

**kotra**

Korea Trade-Investment  
Promotion Agency

**KOCCA**

KOREA CREATIVE CONTENT AGENCY

Partners





# KOREA BRAND & ENTERTAINMENT EXPO **BANGKOK**

2019. 6. 7 (FRI) – 8(SAT)

**B2B** | Centara Grand Convention Hall A1

**B2C** | Siam Paragon, Royal Paragon Hall 1, 2, 3



## OVERVIEW



<b>Hosted by</b>	Ministry of Trade, Industry and Energy Ministry of Culture, Sports and Tourism Ministry of Health and Welfare
<b>Organized by</b>	Korea Trade-Investment Promotion Agency(KOTRA) Korea Creative Content Agency(KOCCA)
<b>Participants</b>	(Korea) ±100 Companies, (Overseas) ±300 Buyers
<b>Date</b>	June 7 <sup>th</sup> (Fri) to 8 <sup>th</sup> (Sat), 2019
<b>Program</b>	Main Events: (B2B) 1:1 Business Meetings (B2C) Consumer Product Showcase, Korea-Thai Friendship Concert, etc Events: K-Food Cooking Show, Honorary Ambassador Fan Signing Event, K-Pop, K-Drama VR&AR Zone, Hyundai Home Shopping Live Show, Korean Make-up Show & Influencer Marketing, Korea Tourism Organization Talk Show

## PROGRAM

### JUNE 7<sup>th</sup> (Fri)

#### B2B | Centara Grand Convention Hall A1

09:30-17:00 1:1 Business Meeting, MOU Signing Ceremony

#### B2C | Siam Paragon, Royal Paragon Hall

##### Concert Hall | Hall 2

18:00-20:00 Korea-Thai Friendship Concert

##### Mini Stage | Hall 3

11:00-12:30 K-Food Cooking Show

13:00-14:30 Make-up Show

14:30-15:00 Korea Tourism Organization Talk Show

##### Promotion Hall | Hall 1,3

10:00-18:00 Exhibition & Event Promotion

### JUNE 8<sup>th</sup> (Sat)

#### B2C | Siam Paragon, Royal Paragon Hall

##### Concert Hall | Hall 2

14:00-16:00 K-POP Cover Dance Festival In Thailand

##### Mini Stage | Hall 3

11:30-12:00 Korea Tourism Organization Talk Show

12:00-14:00 Hyundai Home Shopping Live Show

14:00-15:00 Fan Signing Event Song Ji Hyo

15:00-16:00 Influencer Marketing Show

16:00-17:00 Fan Signing Event WINNER

##### Promotion Hall | Hall 1,3

10:00-18:00 Exhibition & Event Promotion

## ORGANIZER

---



# Korea Trade-Investment Promotion Agency

---



## > About Us

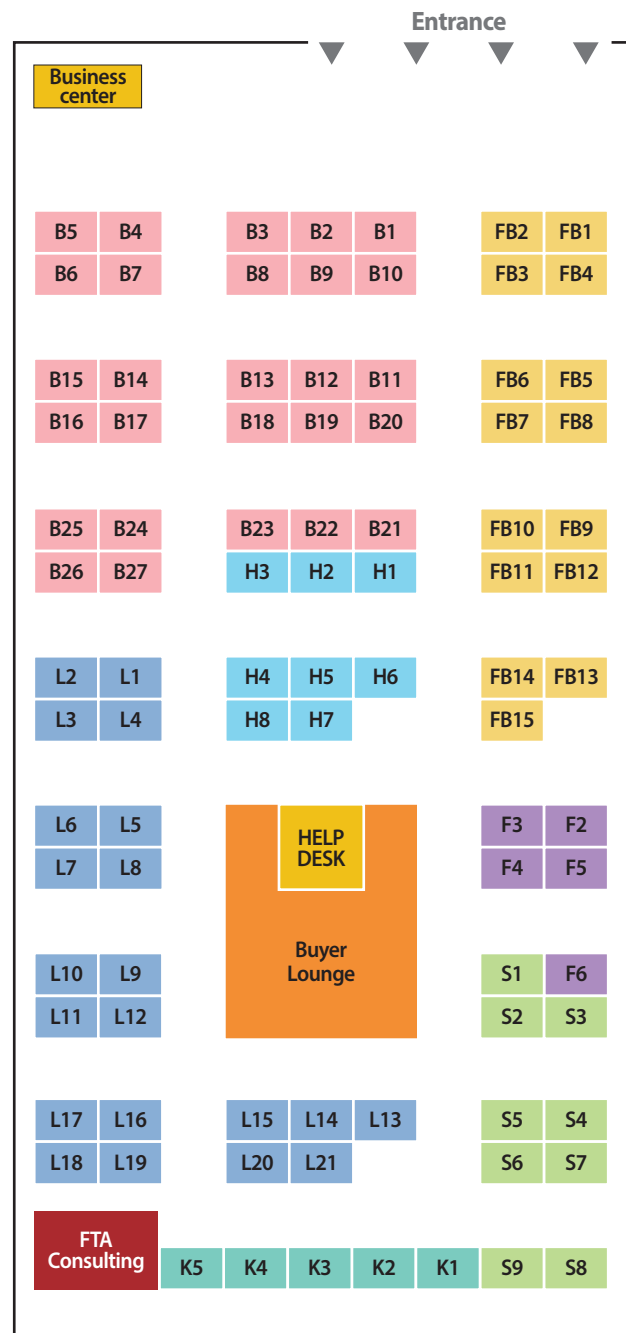
Korea Trade-Investment Promotion Agency (KOTRA) is an agency established to contribute to the development of the national economy by performing work such as trade promotion, investment between domestic and foreign companies and support of industrial technology cooperation etc.

## > Main functions and roles

- Support the entry of SMEs into global markets
- Overseas market information production, spread and consulting
- Diversify target markets and export products
- Attracting foreign investment
- Expand the dimension of economic cooperation
- Stimulate job creation through our core functions
- Performing projects accepted by the government

## FLOOR PLAN

---



## K-Beauty

- B1 AHLIN CO.,LTD  
B2 COREANA COSMETICS CO., LTD.  
B3 DAINS CO., LTD.  
B4 ELSOL COMPANY  
B5 ENDO MEDICS  
B6 FOXTRON, INC.  
B7 GOLDEN STREET INC  
B8 HARUEN LIFE CO.,LTD.  
B9 HNB9 CO., LTD  
B10 HUMAN DREAM CO., LTD  
B11 HUMANPIA COSTECH CO., LTD  
B12 LULULAB INC.  
B13 MARSHALL CORPORATION  
B14 McBrains Co., Ltd.  
B15 MIB CO.,LTD.  
B16 moonsoot  
(CODECOSME INTERNATIONAL)  
B17 NARO MEDICAL  
B18 PLACE CO., LTD.  
B19 SANGHWANG MIIN CO.,LTD  
(SOOSUL cosmetics Co.,Ltd)  
B20 SEARCHLIGHT H&B CO.,LTD.  
B21 TAEYOUNG CO., LTD  
B22 Tieut Inc.  
B23 TIMESYSTEM CO., LTD  
B24 VELLA C&C  
B25 VIKA  
B26 WELL-BEING HEALTH PHARM  
B27 YSJ COSMETICS

## K-Food

- FB1 BANCHAN DANJI CO.,LTD.  
(J-ONE FOOD KOREA)  
FB2 DESIGNNONGBOO CO., LTD  
FB3 GANG DONG O CAKE CO., LTD  
FB4 GUAVALAND  
FB5 HANDFOOD CO.,LTD.  
FB6 HONESTFOOD CO.,LTD.  
FB7 I'M DNL CO., LTD. (YOUNGMI TOPPOKI)  
FB8 JANGSOOFOOD.CO., LTD.  
FB9 KOREA YAKULT CO., LTD.  
FB10 YOUNG POONG CO., LTD.  
FB11 NAMHAEGUN BLACK GARLIC  
FB12 OKRA INTERNATIONAL CO., LTD.  
FB13 SLOWMOMFOOD CO., LTD.  
FB14 SOONSOOFOOD  
FB15 SUPERNATURALS CO.,LTD.

## K-Fashion

- F2 GTS GLOBAL CO., LTD.  
F3 INNOPIA CO., LTD.  
F4 PAINTTERS BY SYSPLANET  
F5 SEODO M&D CO.,LTD  
F6 VOTICA (Wear a Wish)

## K-Healthcare

- H1 CLAIR, INC.  
H2 DADAM MICRO INC.  
H3 HEALTHRIA  
H4 KUMKANG ENS  
H5 MEDIF CO., LTD.  
H6 MENFURS CO.,LTD.  
H7 NANOOM  
H8 SHINSUNG DELTA TECH CO., LTD

## K-Lifestyle

- L1 AHHA CONTENTS LAB.CO.,LTD  
L2 CHENG CHENG INTERNATIONAL CO.,LTD  
L3 DAESOO HI TECH CO.,LTD  
L4 DREAMCHEF CO., LTD.  
L5 ESSER  
L6 FIFTH ENERGY CO.,LTD  
L7 HANIL ELECTRIC CO.,LTD.  
L8 YGPLUS  
L9 INSUNG CO., LTD  
L10 KODAECS CO.,LTD.  
L11 KODO GLOBAL SOLUTION  
L12 KOMAX INDUSTRIAL CO.,LTD.  
L13 KORSIAM  
L14 NARA SYSTEMS CO.,LTD  
L15 NATURAL AND ME CO., LTD.  
L16 NEWWRAP  
L17 PETIT ELIN  
L18 PN POONGNYUN  
L19 REMANN, INC.  
L20 SUPREME MERCHANT CO., LTD.  
L21 YELLOWMEDI

## K-Service

- S1 WORLD VERTEX CORP  
S2 T-IME EDUCATION  
S3 CHUNGDAHM LEARNING  
S4 DARAKWON  
S5 IPORTFOLIO INC.  
S6 JH EDUCONN CO.,LTD. (JHEC)  
S7 LUXROBO CO., LTD.  
S8 PUZZLIA  
S9 VISANG EDUCATION, INC.

## K-Content

- K1 SKONEC ENTERTAINMENT CO., LTD.  
K2 LIVE K  
K3 MAMMOSSIX CO.,LTD.  
K4 SMARTHAN CO., LTD.  
K5 C2MONSTER CO.,LTD

## K-Beauty



## B1 AHLIN CO.,LTD



**Contact** Caroline J **Tel** +82-32-203-7702

**Mail** zzy56@naver.com **Website** ahlin.kr / ahlin.co.kr

**Address** (Songdo The sharp first world),C-2016,107 Haedoji-ro,Yeonsu-gu,Incheon,Korea

### ➤ INTRODUCTION

A was established on November 1, 1996 as a trading company mainly engaged in import & export business. Since its inception, it has started importing raw materials from Pakistan and has been engaged in customs consulting for export & export, merchant trade and other international logistics services for China and other countries.



## B2 COREANA COSMETICS CO., LTD.



**Contact** Michael Cho / Manager **Tel** +82-31-722-7131

**Mail** michael@coreana.co.kr **Website** www.coreana.com/eng

**Address** 114-4, Central town-ro, Yeongtong-gu, Suwon-si, Gyeonggi-do, Republic of Korea

### ➤ INTRODUCTION

Coreana Cosmetics is one of the representative cosmetic companies in South Korea. Coreana Cosmetics has been producing and distributing Korean cosmetics for 30 years, from 1988.

\*Main Brand: AMPLE:N, LAVIDA, SENITE



## B3 DAINS CO., LTD.



**Contact** Dominic Lim /  
Internatioanl sales manager

**Tel** +82-70-8873-6400

**Mail** saleslim@dain-s.com

**Website** www.dain-s.com

**Address** 111. Ballyong-ro. Deokjin-gu, Jeonju-si, Jeollabuk-do.Korea

### > INTRODUCTION

Dains corporation was established in 2014 with high moral philosophy that we make our products for the goodness of all mankind. Our factory has high tech facilities and we are at the leading edge of carbon fiber science and technology. Our flagship model, Glass nail Shiner, is a patented product using semiconductor technology. It is a healthy and eco-friendly product with a very sleek design and the highest quality materials. It has also passed the test for ROHS 6, which means it is certified as a non toxic safe to use beauty product.



## B4 ELSOL COMPANY



**Contact** Yerim Cha/Manager

**Tel** +82-70-4367-0606

**Mail** yrcha@elsolcom.com

**Website** www.elsolcom.com

**Address** 4F, 11, Yeonhui-ro, Mapo-gu, Seoul, Republic of Korea

### > INTRODUCTION

ELSOL company is a "Brand Publishing" company follow the newly developed concept of business model which is based in e-commerce. We make Private Brand and sell the products manufactured from OEM/ODM company. We plan and build the Brands and products that can successfully launch in the market through the using Performance based Ad technology and analysis tool such as (Google Analytics, ROAS-Return on Ad spend). Our each of professional teams and marketers do biral marketing, make media channel Ad clips/s, establish online shopping platform, directly analyze the Ad performance and conversion rate to forming the one-step business process ; manufacturing – distribution – marketing – sales management.





## B5 ENDO MEDICS



**Contact** Kyungju Kim / Manager **Tel** +82-70-7585-7726

**Mail** endomedictrade@naver.com **Website** www.viviball.com

**Address** 303, E&C Venture Dream Tower II, 55 Digital-ro, 33-gil, Guro-gu, Seoul, 08376, Korea

### ➤ INTRODUCTION

ENDO MEDICS is Cosmedics Company(Cosmetic + Medical) pursuing Health Beauty based on 100% Natural Ion stone. Our products is encompassing Beauty as well as health care. We manufacture skin care, Health care and household products based on Ion stone emitting Negative ion and Far-infrared ray. This is why we called ourselves as 'Cosmedics' (Cosmetic + medical) Company



## B6 FOXTRON, INC.



**Contact** Lee Ra Jun/Director **Tel** +82-2-983-1257

**Mail** romania12@hanmail.net **Website** www.drpeko.co.kr

**Address** 103, Samyang-ro 22, Sungbuk-gu, Seoul, S.Korea.

### ➤ INTRODUCTION

Since its establishment in 2014, Foxtron has developed a range of hair products including "Dr. Pelo," a hair loss prevention brand and other products aimed to prevent hair loss, such as shampoo, tonic, and treatment. The firm's performed clinical tests on 50 hair loss patients at the Korea University Ansan hospital for about a year to prove its effectiveness. Shortly after Foxtron released its own shampoo and tonic in June last year, the firm has participated in various beauty exhibitions and counseling sessions in Malaysia, Indonesia and Vietnam



## B7 GOLDEN STREET INC



**Contact** CHOI JONG KUG (CEO)

**Tel** +82-10-5555-5884

**Mail** atoz\_02@naver.com

**Website** www.voyeshop.com

**Address** 202ho 20, Cheongsu-ro 24-gil, Suseong-gu, Daegu, Republic of Korea

### ➤ INTRODUCTION

:[New Conceptual Assembly Customized Blocksoap]

Block soap is a new concept block soap that is assembled to fit the skin type of the user with six different types of skin.

[Three types of dry mask packs used by activating the ampule immediately before use of the new concept]

Dry-bio cellulose mask pack that absorbs ampoules before use as a dry mask sheet rather than as a wet mask sheet.

VOYE MASK PACK



VANHAM BLOCK SOAP



## B8 HARUEN LIFE CO.,LTD



**Contact** Hwang Jun-Ho / CEO

**Tel** +82-10-2255-5656

**Mail** williamhjh@hanmail.net

**Website** www.haruen.kr

**Address** 65, Hwagok-ro 44na-gil, Gangseo-gu, Seoul, Korea.

### ➤ INTRODUCTION

We use natural volcanic stone to produce oil removal and sebum removal beauty equipment. The natural volcanic stone was made into a ball shape. Strong absorption removes oil and sebum from the face. If you roll the ball with makeup, remove only the oil. Also, if you remove makeup, and massage, your skin will become elastic. Roll the ball to remove the oil, wash it and use the maskpac. You can see a better effect.



## B9 HNB9 CO., LTD



<b>Contact</b>	Kang Taegewn / General Manager Lim jina / Marketing Team Manager	<b>Tel</b>	+82-10-5020-5212 +82-10-8383-0997
<b>Mail</b>	taegewn2@hnb9.com jina@hnb9.com	<b>Website</b>	www.hnb9.com
<b>Address</b>	633, Yeonje-ri, Osong-eup, Heungdeok-gu, Cheongju-si, Chungcheongbuk-do, Korea		

### ➤ INTRODUCTION

HnB9 cooperation is beauty total branding enterprise which manufactures and sells various cosmetic products. We have the manufacturing facility and research center for OEM/ODM. Our manufacturing facility is ISO 22716 certified and are suitable for overseas brand production. In addition, we have experienced research manpower resource to enhance competitiveness through the development of raw materials and original technology, and to enable rapid development of products through our affiliated research institute. HnB9 cooperation has a large number of our own brands and sells them through our online shopping mall. As such, we strive to grow together with our partner companies in all areas from product manufacturing to sales.



## B10 HUMAN DREAM CO., LTD



<b>Contact</b>	Kang Hana	<b>Tel</b>	+82-10-5042-0812
<b>Mail</b>	r4u@humandream.co.kr	<b>Website</b>	www.humandream.co.kr
<b>Address</b>	403-1 Jeonju knowledge industry center Palgwajeng-ro 20. Deockjin-gu, Jeonju-si, Jeonbuk-do Korea		

### ➤ INTRODUCTION

Human Dream is a beautiful health-seeking company founded to manufacture and research specialized devices for consumers and professionals. The RF (High Frequency Dermal Beauty Device) "DREAMUP," which was created after years of research, including GMP, has a great effect on relieving pain and creating a healthy, beautiful body without damaging the skin. In addition, specialized devices for skin beauty are researched and developed so that they can be used conveniently and without strain by anyone using their own technical skills.



## B11 HUMANPIA COSTECH.CO.,LTD



**Contact** Misuk Yim/CFO **Tel** +82-70-8280-7040

**Mail** humanpia0@hanmail.net **Website** hmpia.kr

**Address** 18-6, Sinbok-ro, Deokjin-gu, Jeonju-si, Jeollabuk-do, Republic of Korea

### ➤ INTRODUCTION

Humanpia Costech Co., Ltd. was established with the motto of creating beauty. Since it was established in 2009, Humanpia Costech Co., Ltd. aiming a medium enterprise has developed items of facial mask pack and cosmetics for human body with our own brand after starting production of Fucoidan facial mask pack of Samdawn Co., Ltd. as OEM basis and BEAUTIPLEX facial mask pack of LG Household & Health Care



## B12 LULULAB INC.



**Contact** Scarlett Hong / Sales Manager **Tel** +82-10-9575-8659

**Mail** scarlett.hong@lulu-lab.com **Website** www.lulu-lab.com

**Address** lululab Inc. 11F, 2621 Nambusunhwan-ro, Gangnam-gu, Seoul 06267, Republic of Korea

### ➤ INTRODUCTION

lululab is a spin-off company of Samsung Electronics. We developed AI Skincare Assistant LUMINI, the world's first portable device that analyzes a whole facial skin in a snap and recommends the products using AI technology.

LUMINI uses self-developed AI tech for all three steps: scanning, analyzing, and recommending products. For the first two steps, it captures footage optimized for analysis using real-time face recognition technology and increases analysis accuracy through deep learning. When it recommends skin care products, it finds the best products by analyzing online product data, customer reviews through natural language processing.

With this AI and Big data solution, we are innovating the beauty industry by connecting all the beauty entities with skin data.



B13 MARSHALL CORPORATION



Contact	Khvan Svetlana / R&D Head	Tel	+82-10-4316-8011
Mail	marshallcorp1118@gmail.com	Website	schwanengarten.com
Address	29 Ahasan-ro 39-gil Gwangjin-gu Seoul Korea		

INTRODUCTION

Marshall Corporation is a Korean manufacturer of the high-end skincare products under own brand SCHWANENGARTEN. Marshall Corporation R&D Center has a strong research background and experience in natural organic products and persisting to natural ingredients to provide safe and effective care of skin, health and environment. SCHWANENGARTEN high-end skincare products are the output of a steady research in the area of naturally originated ingredients particularly highly active and bioavailable components



B14 McBrains Co., Ltd.



Contact	Ethan Jang	Tel	+82-10-7773-8803
Mail	hajun989@mcbrains.kr	Website	www.maychic.co.kr
Address	7,551, Eonju-ro, Gangnam-gu, Seoul, Korea		

INTRODUCTION

As a media commerce company, McBrains Co., Ltd. has its own cosmetic brand "Maychic". Maychic has various kinds of make-up products and its best selling product, which is eyebrow tint, has been selling more than 1million pieces so far in Korea. Maychic eyebrow tint lasts for up to 7 days after applying to your eyebrows, thus, it reduces your burden and time to draw eyebrow everyday in the morning. Recently, Maychic has launched a new concept of cushion for covering hair loss and a big size cushion for face. They are getting popular both online and offline.





## B15 MIB CO.,LTD.



**Contact** YOUNGHOON CHOI **Tel** +82-10-7214-6769

**Mail** johnny6768@mibkorea.com **Website**

**Address** MIB 5F 32-1 Gwangbok jungang-ro, Jung-gu, Busan, Korea

### ➤ INTRODUCTION

MIB Co., Ltd. has focused on e-commerce business like online shopping mall and has more than 11,000 items since its establishment in 2011. We had concentrated on the domestic market only, but we have started to focus on the overseas market since 2016. Prior to formal exports, we entered overseas internet shopping malls like eBay and Amazon without difficulty.

This year, we are preparing to participate in various exhibitions, fairs and buyers' conferences to advance overseas. Based on the evaluation of consumers through this project, we will strengthen our global competence in 2019 by establishing a solid foundation that will lead to successful export.



## B16 moonshot (CODECOSME INTERNATIONAL)

moonshot

**Contact** Sue Ji Park **Tel** +82-1566-6998

**Mail** ha **Website** www.moonshot-cosmetics.com.

**Address** 7,

### ➤ INTRODUCTION

#### Skincare/Cosmetics

The cosmetic brand made by YG Entertainment.

It posts YG STLYE AND BEAUTY – Valuing people with natural talents and unique characteristics the stereotypical “beauty”

#### Skincare

•Perfect Cleansing oil, Mist essence, Moonbright Cream etc.

#### Cosmetics

•Multi protection UV BOUNCER/FIXER etc.

•Instant Hydrates, Protects skin from photoaging(SPF50+, PA+++)

•Fresh and featherweight like skincare



## B17 NARO MEDICAL



**Contact** GAYOUNG NAM / MANAGER **Tel** +82-51-784-7608

**Mail** nanoeshop@naver.com **Website** www.nanoeshop.kr

**Address** 5F 82, Jaeban-ro, Haeundae-gu, Busan, Korea

### > INTRODUCTION

We are established in 2001, and specialized in develop, manufactures and export medical cosmetics, cosmetic and medical devices. Currently, we export our product to China, Indonesia, Malaysia and Thailand. Also we have plan to expand our business more and more to export Southeast Asia country. Our main products are ART LINER Intensive Serum, Meso Liner Intensive Serum, ART LINER Intensive Serum +, ART LINER Intensive Serum for BODY, NANOMAX, Meso Glow and Re : on (HA filler).



## B18 PLACE CO., LTD.



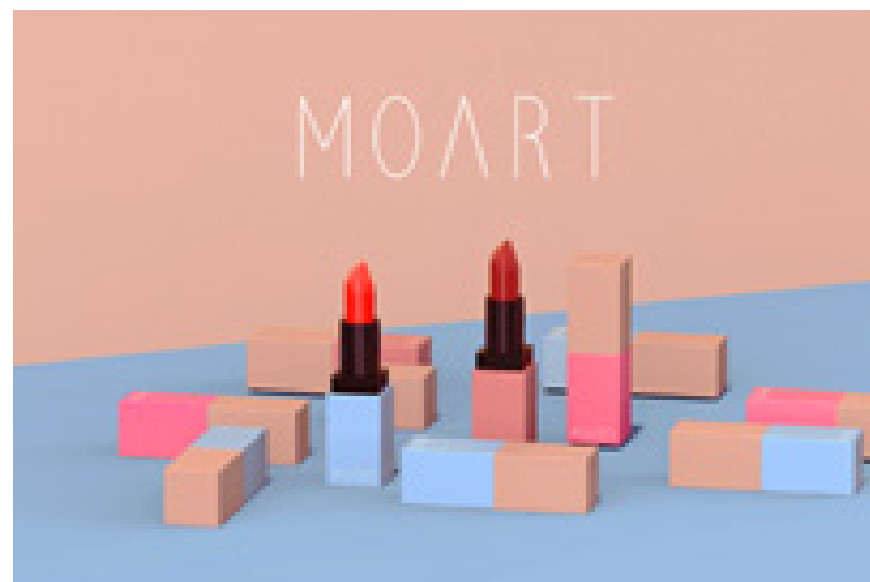
**Contact** SHIN KYUNG SUK **Tel** +82-10-7168-8823

**Mail** shin\_0104@moart-beauty.com **Website** www.moart-beauty.com

**Address** 270, Banghwa-daero, Gangseo-gu, Seoul, Korea

### > INTRODUCTION

Moart is Contemporary brand that expres beauty from Professional Vision with Artistic approach. Moart is giving s ophisticated,, modernistic and Valuable beauty through Various target aging.





B19

## SANGHWANG MIIN CO.,LTD (SOOSUL cosmetics Co.,Ltd)



**Contact** Youngsang Shin / CMO **Tel** +82-51-7589115

**Mail** info@soosul.com **Website** www.soosul.com

**Address** 314, Busan Digital Valley, 303 Daedong-ro, Sasang-gu, Busan, Korea

### ➤ INTRODUCTION

Established in 2002, we are the best in Korea as mushroom based cosmetic company. According to our researches, Sang Hwang mushroom(Phellinus linteus) has the most benefits for skin. And we use diverse method to bring out the best effect of it. We use actual mushrooms, not bacteria and fungus cultivated from lab. Also we have been selected by the government as one of the leading company in recognition of the innovative R&D capability for developing traditional Korean herbal components. We have international clients including OEM buyers in more than 25 countries with supporting 7-branches in foreign market.



B20

## SEARCHLIGHT H&B CO.,LTD.



**Contact** Yang Sungyoung / CEO **Tel** +82-2-6342-5162

**Mail** rarita@peaceofskin.com **Website** www.peaceofskin.com

**Address** No. 715, Daerung Technotown 19, 70 Gasan Digital 2-ro, Geumcheon-gu, Seoul, Korea

### ➤ INTRODUCTION

Searchlight H&B Co. Ltd. is the exclusive manufacturer of the seahorse cosmetics in Korea. We use the 'artificially raised' seahorse from Jeju Island which is certified as the traditional medicine and seafood by KFDA, and Halal as the safe key ingredient of our products.



## B21 TAEYOUNG CO., LTD



**Contact** Elaine Kwon **Tel** +82-10-4459-1244

**Mail** aekyung.kwon@gmail.com **Website** www.elensilia.com

**Address** 5F Taeyoung Building, 182 Unjungro, Bundanggu, Sungnam-si, Gyeonggi-do, South Korea

### > INTRODUCTION

Taeyoung Cosmetics Co., LTD is a leading cosmetic company in Korea with a number of award-winning brands within the group. With a various range of brands offering different targets and channels, Taeyoung Cosmetics Co.,LTD is serving its global customers in around 30 countries all over the world. Taeyoung is well-known for its highly effective yet affordably priced products portfolio, focusing on different customers' needs. To target the customers' satisfaction, Taeyoung offers solutions to target multiple skin concerns such as anti-aging, brightening, pore-tightening, firming and wrinkles, etc.



## B22 Tieut Inc.

Tieut

**Contact** Songee Yoon/ Manager **Tel** +82-10-6532-1536

**Mail** songee.yoon@tieut.com **Website** www.tieut.com

**Address** 4th floor, Suyeong-ro 688, Suyeong-gu, Busan, Korea

### > INTRODUCTION

Tieut Inc. is Women Feminine Care Company. We are trying to improve women's feminine health by solving the women's health problems with Tieut products. Tieut Feminine Wash and Tieutcup can be good solutions for your health.



## TIMESYSTEM CO.,LTD (Pime Happy Time)



**Contact** Kwang il Choi / Director **Tel** +82-10-8804-6373

**Mail** blue@timesys.co.kr **Website** www.timesys.co.kr

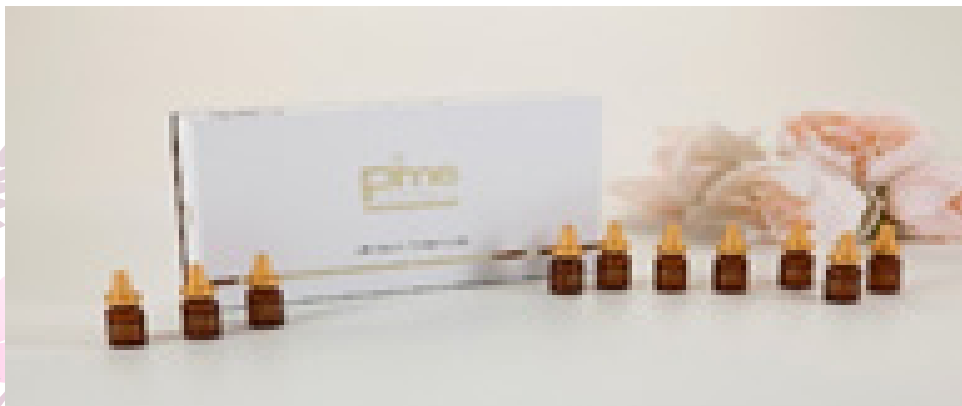
**Address** 2F, 312, Galma-ro, Seogu, Daejeon, Korea

### ➤ INTRODUCTION

Time System develops and sells skin-friendly cosmetics based on ingredients extracted from nature and provides anti-bacterial and anti-bacterial cosmetics such as skin trouble, sedation of pimple and problematic skin, and regenerates skin cells through circulation promotion of skin cycles. In addition, we are gradually expanding our range by launching basic cosmetics products such as skin-friendly moisturizing ampoule, skin regeneration ampoule, cleansing foam and modeling pack.

Pime remade ampoule is a highly concentrated peptide ampoule configuration that provides additional effects of double functionality (increased whitening plus wrinkles) based on improvement of the acne and acne. Melitin, the main ingredient of the BEE Venom, is effective in the determination of skin elasticity, acne, and inflammation.

- Skin trouble hypersensitivity Block & Reduction
- Soothing management of problematic skin (Help skin trouble and acne skin)
- Recycling skin cells by promoting the circulation of skin cycles
- Excellent anti-bacterial and anti-inflammatory functions



## VELLA C&C



**Contact** THEO LIM / MANAGER **Tel** +82-10-8890-3522

**Mail** theo@vellacosmetic.com **Website** www.vellacosmetic.com

**Address** 2nd floor, 15, Jahamun-ro 6-gil, Jongno-gu, Seoul, Republic of Korea

### ➤ INTRODUCTION

The name "VELLA" comes from the combination of the word Bella, meaning "beautiful" in Spanish, and "V" from the English word "victory". It reflects our endless dedication to passion for beauty. As a specialized brand for skin, we are global company exporting to various countries. In particular, Neck Care Line is proud of its quality as a leading company in the global market.



## B25 VIKA



**Contact** LEE NAWON **Tel** +82-10-6368-9324  
**Mail** vika.naon@gmail.com **Website** daily-vika.com  
**Address** 3F, 43, Dosan-daero 81-gil, Gangnam-gu, Seoul, Republic of Korea

### ➤ INTRODUCTION

VIKA was created by NAON, a graphic designer and a nail artist, with a passion to create a brand for those who love nail art that is visually delightful and the heart be touched by experiencing. All products of VIKA have been directed, designed and materials have been personally selected by her.



## B26 WELL-BEING HEALTH PHARM



**Contact** Anastasia Oh / Manager **Tel** +82-10-7603-0663  
**Mail** nastya.ogay@gmail.com **Website** www.wh-pharm.com  
**Address** 106 Eunbong-ro, Namdong-gu, Incheon, South Korea

### ➤ INTRODUCTION

Wellbeing Health Pharm is a company that manufactures and sells skin care cosmetics and OEM/ODM with leading technical skills and know-how since its establishment in July 2007. Currently, We are working hard to be a top-notch with various products such as skin beauty, lifestyle items and also Chinese brand KIHOO ,OEM manufacturing based on our main product Gounbal and Gounson.

The way to return to Customers' unchangeable belief and love, is to provide better quality goods and services as well as to perform faithfully social responsibility through living up the responsible management. We will be a trustworthy partner for the future seeking human's health, beauty and happiness. We are securing over 23,000 numbers of Pharmacy and Hospital-related customers across the nation. For 5year consecutive no. 1 market share in nationwide pharmacy for Foot Cream.



**Contact** KO Wonjun / CEO

**Tel** +82-10-7538-3773

**Mail** ysj110321@gmail.com

**Website** www.ysjkorea.com

**Address** 8-21, Sesi-ro 208beon-gil, Chuncheon-si, Gangwon-do, Republic of Korea

## ➤ INTRODUCTION

YSJ Cosmetics is a specialist manufacturer and distributor of Hair & Skin care and make-up. We produce and supply cosmetics and pharmaceutical products of the highest quality for export and maintain over 70% export rate for our products as a global company as well as domestic marketing in Korea, doing service of OEM & ODM. YSJ Cosmetics is coming one step closer to its goal of becoming a global leader in the development, production, and distribution of only the finest products.





## K-Fashion



## F2 GTS GLOBAL CO., LTD.

## GTS Global

**Contact** Daniel Son / director **Tel** +82-10-2458-1560

**Mail** <http://www.ballopkorea.com> **Website** <http://www.ballopkorea.com>

**Address** C-508, 744, Pangyo-ro, Bundang-gu, Seongnam-si, Gyeonggi-do, Republic of Korea

### > INTRODUCTION

From the launching of ultra light shoes by own technology development, we expand business category to deal with total sports products through our brand "Ballop". Ballop stand for "running to outdoor with bare feet", it is composed with BAREFOOT and GALLOP. Now our brand is being well known to domestic and overseas market together.



## F3 INNOPIA CO., LTD.



**Contact** SUNG-MO JUNG/CEO **Tel** +82-10-7159-6805

**Mail** [innopia00@gmail.com](mailto:innopia00@gmail.com) **Website** <http://innopia-global.com>  
<http://seller.buykorea.org/innopia-EC148050>

**Address** 514-1, Industry Academic Cooperation Foundation, 365, Sinseon-ro, Nam-gu, Busan, Korea

### > INTRODUCTION

INNOPIA, a state-of-the-art material manufacturer, established to contributing to the mankind through creating future values by the development, production and sales of athleisure wear (sports wear, sports bra, leggings), fashion items (functional underwear, fashion socks, sports innerwear) and functional nonwoven fabric (weed control sheet, water proofing sheet) etc.





F4

## PAINTTERS BY SYSPLANET



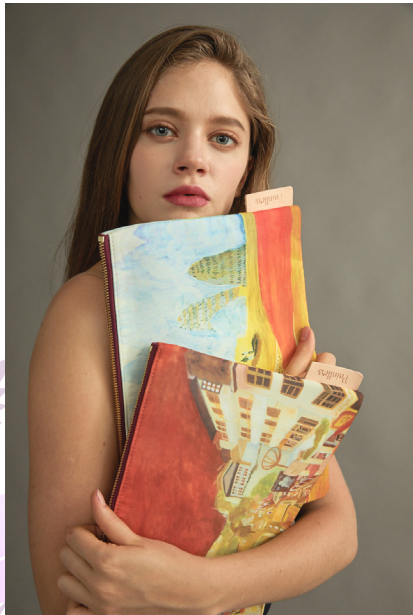
**Contact** Yoonwoo Kim **Tel** +82-10-8869-6086

**Mail** cosmoyw@naver.com **Website** www.paintters.com

**Address** 2F, 30-10, Nonhyeon-ro 26-gil, Gangnam-gu, Seoul, Republic of Korea 06302

### > INTRODUCTION

Paintters has launched the brand in 2017 with the philosophy of "putting on art in everyday life." Bag and scarf are the main items, and there are two collection; one is the 'Art-Collaboration' which is collaborating with the artist and the other is 'Easy' that is natural and chic. All of our designs are exclusively dedicated to our original design. We're not getting caught up in trends, and we're creating products that are constantly creating our own colors, that are more authentic as time goes by and that are both classic and modern.



F5

## SEODO M&D CO.,LTD(WEST ISLAND)



**Contact** CHAN MOON / CEO **Tel** +82-10-8725-9100

**Mail** seodo@iseodo.co.kr **Website** www.westisland.co.kr

**Address** 204, Hanbit Bd. 179Yeoksam-ro, Gangnam-gu, Seoul 135-925

### > INTRODUCTION

West Island, which started in London, has become a global brand by collaborating with world-famous brands, for its European fashion sensibility and high quality. West Island is further enhancing brand value by collaborating with Swarovski.





**Contact** JayPhil Song/CEO

**Tel** +66-63-732-0126

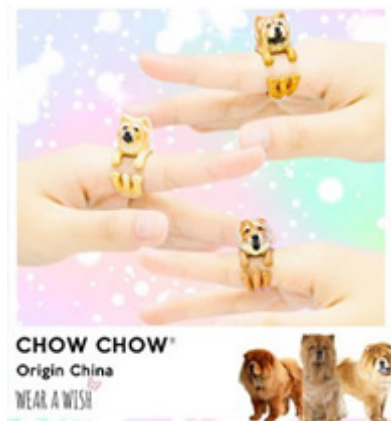
**Mail** [contact@wearawishstore.com](mailto:contact@wearawishstore.com)

**Website** [wearawishstore.com](http://wearawishstore.com)

**Address** [instagram.com/wearawish](https://www.instagram.com/wearawish)

### ➤ INTRODUCTION

"Wear a Wish" is unique, fashionable jewelry brand that motivated by our lovely "pet", "endangered animal", and "nature". We making our meaningful piece by our hand-painting skill. Our hand-painting jewelry did hand-painting on metal (like silver, brass). Compared with Ceramic jewelry, our piece is not easy to break and size is adjustable.



## K-Food

---



FB1

## BANCHAN DANJI CO.,LTD. (J-ONE FOOD KOREA)



<b>Contact</b>	KIM SUNG YONG/ Deputy director NAM WOO JU/ mosqus	<b>Tel</b>	+82-10-8349-2481 +82-10-4928-1696
<b>Mail</b>	3492481@hanmail.net rosmsso@naver.com	<b>Website</b>	www.danji.kr
<b>Address</b>	20, Geonji-ro 95beon-gil, Seo-gu, Incheon, 223-210, Korea		

### ➤ INTRODUCTION

Since starting in the name of Buyeo Sangsa in 1983, we established distribution company Buyeo Food System in 2003, manufacturing corporate Banchan Danji Co., Ltd in 2004 and trading corporate Danji Food in 2007 to serve manufacturing & distribution in one stop system. So we can supply over 1,000 local & foreign companies with competitive price & good quality. We are supplying to department store, large discount mart & distributors in earnest by establishing "Banchan Danji" in 2003 manufacturing salted seafood & side dishes. With our experience & accumulated knowhow, we are mass producing & distributing at our China factory. Also we are exporting to USA, Japan, Philippine, Middle East, etc actively from our 2nd factory established in 2015 under HACCP standard. Banchan Danji will do our best to maintain top brand by providing our customers with the best-tasting & best service developed with our managing system & knowhow.



FB2

## DESIGNNONGBOO CO., LTD



<b>Contact</b>	Dave Kim/Assistant Manager	<b>Tel</b>	+82-10-2311-1066
<b>Mail</b>	nongboo66@gmail.com	<b>Website</b>	http://www.designnongboo.com
<b>Address</b>	1-130, Dogang-gil, Deokjin-gu, Jeonju-si, Jeollabuk-do, Korea		

### ➤ INTRODUCTION

Design Nongboo is a leading agricultural corporation devoted to boosting the consumption of homegrown farm produce with a high added value by making a deal with excellent Korean companies and consumers through processed domestic agricultural products coming in small packages.





Contact Min Jea Kang/Team Leader Tel +82-10-2299-8744

Mail gdocake@hanmail.net Website www.gdocake.com

Address

### ➤ INTRODUCTION

Gang Dong O cake was founded in 2005 to promote Korean bakery. Gang Dong O cake's brand 'Poong Nyun bakery' have a 21 franchise (1 company-operated store and one of company-operated store was opened 1964) and online shopping mall. Gang Dong O cake representative goods is made of Korean flour handmade 'choco-pie' and 'HE-WO-DA-MI' made of Korean rice & seaweed. Gang Dong O cake was certified ISO9001, INNO-BIZ, export promising small company, venture company.



Contact LIM TAEHUN/CEO Tel +82-10-2592-9585

Mail hooncchi@nate.com Website www.guavaland.co.kr

Address 32-20, Sannam-gil, Chilgok-myeon, Uiryeong-gun, Gyeongsangnam-do, Korea

### ➤ INTRODUCTION

GuavaStory is a comprehensive product lineup that includes Guava tree, fruit, teas, noodles, body care, and cosmetic products. It is made from guava leaves harvested during the season when they have their highest nutrient content. The caffeine-free leaves are then cleanly dried to preserve the high contents of polyphenol antioxidants.





## HANDOFood CO.,LTD.



**Contact** Bang Hye-Ryeon/Assistant manager **Tel** +82-10-5285-3906

**Mail** handofood@naver.com **Website** www.handofood.com

**Address** 543-9, Sail-ro, Cheongtong-myeon, Yeongcheon-si, Gyeongbuk-do, Korea.

### ➤ INTRODUCTION

Handofood is the best food company that processes our agricultural products to taste traditional, promotes the consumption of local agricultural products, and produces safe food with 3 patents, 7 trademark rights and certifications such as ISO, HACCP, US FDA, MUI halal, etc.



## HONESTFOOD CO.,LTD



**Contact** KimJinHwan/Assistant manager **Tel** +82-10-4590-0547

**Mail** yabul777@naver.com **Website** www.yabulmall.co.kr

**Address** 59-11, Biseongnal-ro, Deokjin-gu, Jeonju-si, Jeollabuk-do, Republic of Korea

### ➤ INTRODUCTION

We are the pioneers for developing the technology to cook ramyun with cold water, which can be enjoyed outdoors. Since 2014, at Honest Food, we have developed multiple cookware to cook food without using electricity and fire. And furthermore, using this technology we also developed food products including the noodle series and rice series. We are fully dedicated to make everyone enjoy a nice meal anytime anywhere using the best technology and ingredients.



## I'M DNL CO., LTD. (YOUNGMI TOPPOKI)



**Contact** Tae Park/General Manager **Tel** +82-10-2745-0413

**Mail** kfood@iamdnl.com **Website** www.youngmifoods.com

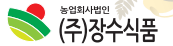
**Address** 395-2, Cheonho-daero, Dongdaemun-gu Seoul, 02633 Korea

### > INTRODUCTION

I'm DNL Co., Ltd. is a food specialized company providing authentic Korean taste in HMR products. To grow into a reliable and trustworthy company known for providing tasty, healthy, and safe food to people all around the world, we constantly conduct research through collaboration with top university researchers in Korea. In addition, we have HACCP, ISO, HALAL certifications. We insist on quality products that can enhance the national status, and with the corresponding products we actively participate in global food related exhibitions



## JANGSOOFOOD.CO., LTD.



**Contact** Park yeonja **Tel** +82-10-2683-9378

**Mail** js0105577@naver.com **Website** www.jangsoofood.com

**Address** 9, Jukhwang-ro, Bonghwang-myeon, Naju-si, Jeollanam-do, Republic of Korea

### > INTRODUCTION

JangSooFood is always with local small farmers and elderly people. We provide job opportunities for the socially disadvantaged, elderly, multicultural families, and low-income families. We buy farm products from small farmers and aged farmers in the region first, thereby increasing income and improving the quality of their lives. We provide free products to the socially disadvantaged, such as social welfare facilities, facilities for the disabled, and nursing homes to take the lead in regional development.







## KOREA YAKULT CO., LTD.



**Contact** CHO KUK / Manager **Tel** +82-10-9258-9030

**Mail** 10002322@yakult.co.kr **Website** www.hyfresh.co.kr

**Address** 577, Gangnam-daero, Seocho-gu, Seoul, Korea

### ➤ INTRODUCTION

The Korea Yakult brand represents functional fermented milk products in Korea. The Korea Yakult, founded in 1969, has been recognized as the best food company in the country.

- Korea Yakult Company Limited (South Korea based)
- Establishment : 1969 - Annual Sales : USD 1,000 million (As of 2018)
- Operating Revenue Growth : 5% CAGR (Last 3 yrs)
- Primary product : Dairy Foods, Functional Foods
- No. 1 Market share of fermented milk in Korea
- Number of employees : 2,868 - Actively exporting to nearly 50 countries



## YOUNG POONG CO., LTD.



YOUNG POONG CO., LTD.

**Contact** KWON SAEROM / STAFF **Tel** +82-70-7705-4788

**Mail** trade@ypfoods.co.kr **Website** www.ypfoods.co.kr

**Address** 64, Seongseogongdanbuk-ro, Dalseo-gu, Daegu, KOREA

### ➤ INTRODUCTION

Young Poong Co., Ltd. is one of the best Korean food company. Our company has our own domestic factories, so we have production, distribution and sales management. Also, export to more than 50 countries around the world. Our flagship is 'Yopokki', Rice pasta. The strengths of this product are easy cooking methods, long shelf life and easy storage for one year at room temperature. These are Korean traditional food including rice cake which can be ready for just 3 minutes in a microwave or pan. Moreover, its has been exported to over 30 countries. You are available cup type for 1 or pouch type for two or more.



FB11

## NAMHAEGUN BLACK GARLIC



Contact Tel +82

Mail Website www.powergarlic.kr

Address 176-40, Seolcheon-ro, Seolcheon-myeon, Namhae-gun, Gyeongsangnam-do, Republic of Korea

### INTRODUCTION

We use garlic that grow in Namhae-gun where garlic has been registered as geographical indications, Republic of Korea. Namhae-gun's garlic grow with Sea breeze and the sun, The garlic characterized by high nutrients and deliciousness. We Using a surpassing manufacturing process mugwort-fumigation fermented black garlic in a cypress box(No. 10-0774498). Use cypress box that contains lot of phytoncide. Does not use stainless steel box. By using a surpassing manufacturing process mugwort-fumigation fermented black garlic in a cypress box, creating a rich flavor of mugwort and nutritional components are got better. Our products are made by GMP certified (by the Republic of Korea Food and Drug Administration) facility-pharmaceutical company, has high level of reliability.



FB12

## OKRA INTERNATIONAL CO., LTD.



Contact Kim Min Jin/Assistant manager Tel +82-10-9209-1934

Mail mjkim@korinus.com Website www.okraint.com

Address #1308 ,Private Tower II ,171, Magokjungang-ro Gangseo-gu, Seoul, Repubilc of Korea

### INTRODUCTION

Established in 2014, OKRA INTERNATIONAL CO.,LTD. aims to source, develop and export competitive products to countries around the world. Starting with cooperation with local partner in Indonesia, we have continuously expanded our overseas distribution network also successfully launched our own product, TOK- POKI, in Indonesia. We will be OKRA INTERNATIONAL CO.,LTD. who strives to maintain our first intention even in the midst of infinite competition with a rapidly changing global companies.





## SLOWMOMFOOD CO., LTD.

**Contact** HA WOO GYUNG

**Tel** +82-55-367-3744

**Mail** slowmom3744@daum.net

**Website** www.slowmom.net

**Address** 54-5, Geumsan 5-gil, Dong-myeon, Yangsan-si, Gyeongsangnam-do

### ➤ INTRODUCTION

Our company starts with a business idea of customer satisfaction, healthy eating, meat processing, and I think of high quality and cleanliness while producing in the sauce manufacturing and distribution business. My mother's sincerity is that she insists on traditional manufacturing methods to make food and to make domestic honey. It's a diet that uses unseasoned sugar and apple juice to think about your health.



## SOONSOOFOOD



**Contact** INSUP KIM

**Tel** +82-70-8787-1588

**Mail** mbskinnet@naver.com

**Website** www.soonsoofood.co.kr

**Address** 539, Sunhwan-ro, Jinju-si, Gyeongsangnam-do, Republic of Korea

### ➤ INTRODUCTION

Soonsoo Food believes the word "Soonsoo" (meaning "pure" in Korean) comprises the meanings of faith, trust, and honesty. We select only the highest quality ingredients to produce honest products that benefit the health of many families. Soonsoo = Faith + Trust + Honesty We will return your faith and trust with only honesty.



**Contact** Leo Woo/CEO

**Tel** +82-10-6667-9466

**Mail** healthfoods@naver.com

**Website** www.super-drops.com

**Address** 43-3, Geonji-ro 121beon-gil, Seo-gu, Incheon, Republic of Korea

### ➤ INTRODUCTION

Established in 2012, SUPERNATURALS CO., LTD. is growing steadily every year. We are supplying functional beverages to various distribution channels in Korea, also expanding international partnerships for global market. In particular, Vita Drops was awarded in the Innovation Food Category of the 2018 Seoul International Food Show. We are constantly exploring new function with accumulated technique and plan to expand upon our ever-growing flavor lineup in the near future.

**1 Cut.**  
**2 Squeeze.**  
**3 Shake&Enjoy!**

Please take a Vitadrops mixed with 500ml of mineral water.



### SUPERNATURALS

start early, make a difference

**Contact Point**  
Website: www.supernaturals.co.kr E-mail: hseo@supernaturals.com (English or Chinese)  
Representative: Hseo Dong-yeon T: +82 2 554-6393  
Contact person: Hseo Dong-yeon (English/Chinese) F: +82 2 639-7905  
Hseo Dong-yeon@supernaturals.com

**Address** | Korea: Vita Drops Supernaturals Company Ltd. 43-3, Geonji-ro, Seo-gu, Incheon, Korea  
406-407, 36 Seonam-ro, Seongnam-si, Gyeonggi-do, Korea  
406-407, 36 Seonam-ro, Seongnam-si, Gyeonggi-do, Korea

**Company Introduction**  
The Supernaturals Co., Ltd. is a health food company that is dedicated to provide consumers with quality, innovative, and non-transgenic products. All products are developed by the world's top experts and produced under strict food safety standards in Korea.



## K-Healthcare



## H1 CLAIR, INC.



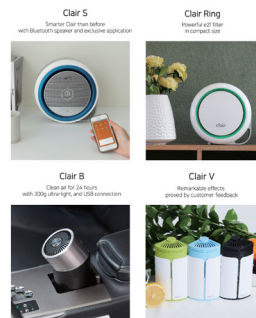
**Contact** Elaine, Jang / Manager **Tel** +82-10-8866-1702

**Mail** hyjang@clair.kr **Website** www.clair.kr

**Address** 2F, 148 Gangnam-daero, Seocho-gu, Seoul, Korea

### > INTRODUCTION

Established in year 2014, The Clair, our office and factory are in Korea and we are dedicated to providing the most effective air purifiers. Unlike other large air purifiers, Clair is compact and suitable for your private area. It features its attractive and sophisticated design, which makes itself even closer to you. Harmonizing with its environment, Clair will always create clean air in a workplace, bedroom, Children's room etc. Clair's main technology, the E2F filter, has a European patent and captures particles 0.1 micrometers in size.



## H2 DADAM MICRO INC.



**Contact** Haein Oh / Assistant Manager **Tel** +82-10-8997-6583

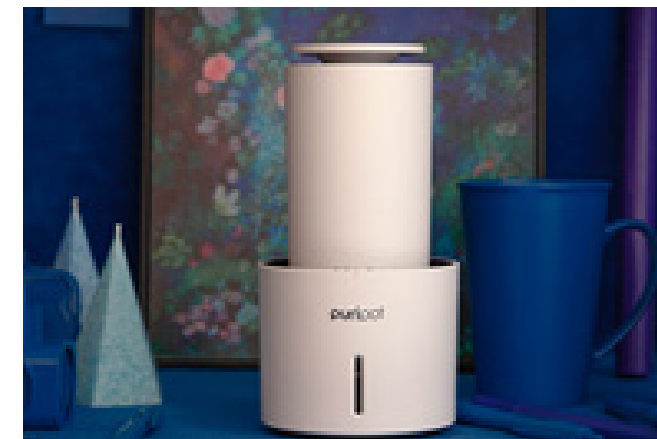
**Mail** lydia.oh@dadammicro.com **Website** www.puripot.com

**Address** B-502 Pangyo InnoValley, 253 Pangyo-ro, Bundang-gu, Seongnam, 13486, Korea

### > INTRODUCTION

Since its establishment is 2000, Dadam Micro Inc. has focused on the smart home network system business and currently occupies about 30% of the new apartment market in Korea by OEM manufacturing method. Dadam Micro has won the CES(Consumer Electronics Show : the largest world home electronics show) Innovation Awards in 2017 and 2019 with the following product

- mobeat(2017) : Non-contact vital sign measurement device
- puripot(2019) : Filterless personal air purifier with photocatalyst reaction to visible light



## H3 HEALTHRIA



**Contact** Ju Yuri / Manager **Tel** +82-10-9309-3751  
**Mail** ju\_yr@healthria.com **Website** www.healthria.com  
**Address** 1105, Seoulsoop IT valley, 77, Seongsuil-ro, Seongdong-gu, Seoul, Republic of Korea

### > INTRODUCTION

Healthria is specialized in healthcare products. Based on high quality, we are the official partner company of large companies such as woongjin coway, e-mart, lotte, gs shop. To expand the brand not only domestic but also abroad, we run a tv commercial, home shopping, drama PPL based on celebrity model. We are leading companies in the area of dust mask market competitiveness.



## H4 KUMKANG ENS (u2sports)



**Contact** Monsiri Tanboonek **Tel** +66-82-951-4527  
**Mail** bmonsiri@gmail.com **Website** www.pishabit-thai.com  
**Address** 107, Hakdong-ro, Gangnam-gu, Seoul, Republic of Korea

### > INTRODUCTION

In 1961, We established company that makes light products, and since 2003, have managed Thai Hankang Lite in Thailand. We have found needs of local country which is 'Avoiding from Ultra Violate'. Using special material coming from South Korea, we develop mask that can block UV effectively and, now we are developing other related products either. We are keeping receiving order from near other country, and making plan to export to more diverse countries.



## H5 MEDIF CO., LTD.



**Contact** JANG MYUNGWON/DIRECTOR **Tel** +82-10-2993-3512

**Mail** medical-friend@naver.com **Website** www.medif.co.kr

**Address** 112, IPSEOK-RO 1GIL, DONG-GU, DAEGU, KOREA

### ➤ INTRODUCTION

It has been registered with KFDA in October 2017, and registered with US FDA in May 2018, and China GB TEST December 2018. MEDIF CO., LTD was selected as an export enterprise in 2017 and 2018. The color is black and based on 99% beaten silver. It contains patented Acaiberry extract.



## H6 MENFURS CO.,LTD.



**Contact** Jo Seok / CEO **Tel** +82-10-4605-5251

**Mail** menfurs.sjo@gmail.com **Website** www.menfurs.net

**Address** 239-10, Pyeongdongsandan-ro, Gwangsan-gu, Gwangju, Republic of Korea

### ➤ INTRODUCTION

With our business philosophy of respect and thoughtfulness and with a sense of duty to make and provide product for the people we love, Menfurs' effort continues to satisfy the needs and expectation of customers. Come and knock our door, and you will find out the optimal solution waiting for you. We also promise to run the business in the spirit of sharing and care for socially vulnerable group and people in needs, and take a role of responsible social enterprise diligently and sincerely.



## H7 NANOOM



**Contact** JANG MYUNGWON/DIRECTOR **Tel** +82-10-2203-7373

**Mail** nanoom@paran.com **Website** www.gmask.net

**Address** 201, 9-10, Hyeonmu 3-gil, Wansan-gu, Jeonju-si, Jeollabuk-do KOREA (55000)

### > INTRODUCTION

Protects the respiratory system from dust, fine dust, ultra-fine dust, airborne dust, strong odor, smog, and pollen Organic Cotton Cover One-Way  
Exhalation Valve : Releases exhales only for comfortable breathing,  
Releases moisture and hot air within the mask  
Melt Blown Filter : Filters pollutants Blocks over 90% of nanoparticles  
Shape-memory nose wire : Fits curves perfectly, Prevents fogging, Prevents slippage 3-D Ergonomic Design The Goguma mask has a 3-D design that prevents contact between the mask lining and your mouth.



## H8 SHINSUNG DELTA TECH CO., LTD



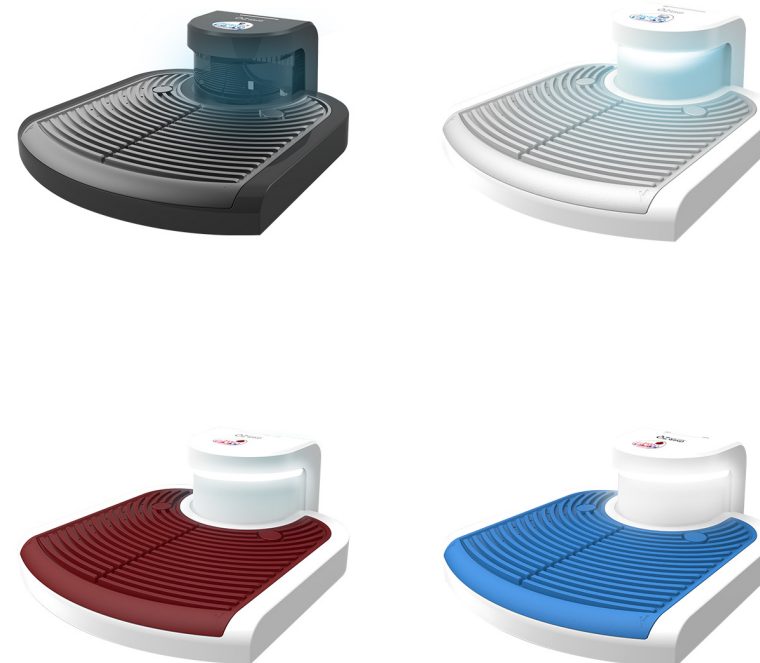
**Contact** Tae woo, Kim / Manager **Tel** +82-10-9970-8220

**Mail** cinnamon3@ssdelta.co.kr **Website** http://ozwind.co.kr

**Address** 39, Gongdan-ro 271beon-gil, Seongsan-gu, Changwon-si, Gyeongsangnam-do, Republic of Korea

### > INTRODUCTION

Shinsung Delta Tech was established in 1987. We have been doing business with large-size companies such as LG, Samsung, Hyundai, KIA etc. in both Korea and overseas. Our overseas operations are in Thailand, China, Vietnam, Poland, Indonesia, Mexico and the United States. We are giving satisfaction and happiness to our customers through our new concept body dryer Ozwind.



## K-Lifestyle





## L1 AHHA CONTENTS LAB.CO.,LTD



**Contact** Hyoseop KANG / CEO **Tel** +82-31-821-7337

**Mail** master@ahhacl.com **Website** www.ahhacl.com

**Address** 105#, 86, Sinchon-ro, Uijeongbu-si, Gyeonggi-do, South Korea

### ➤ INTRODUCTION

AhHa Content Lab is a contents planning and design company, and it is a company whose main business is character development and commercial design. It is a company that will lead the K-goods nowadays, which is the big issue of Korean Wave, with its business know-how of 10 years in Hangul Item Company BAN8. The main category is the design stationery



## L2 CHENG CHENG INTERNATIONAL CO.,LTD



**Contact** Hui Jee Yang **Tel** +82-70-4772-4774

**Mail** cci\_hui@naver.com **Website** www.ccti.co.kr

**Address** #720, Poonglim B/D, 127, Mapo-daero, Seoul, South Korea

### ➤ INTRODUCTION

Founded in February 2011, Cheng Cheng International is a young company. As it has firm visions and enthusiasms, it exports its products and brands to countries like China, Thailand and Malaysia, though it has not long been established. In addition, It has been establishing a foundation as a general trading company. Expanding its field of business not only to trades, but to manufacturing.

Cheng Cheng International that started with a name by exporting oral care products has achieved continuous growth by producing and distributing various products such as childrens products, detergents, soaps, and food and has planted the image of Korean technology accords with the global standard by consistently expanding its businesses into foreign countries.



## L3 DAESOO HI TECH CO.,LTD



**Contact** KIM CHANG KYUN/CEO **Tel** +82-42-863-0830

**Mail** kck3225@naver.com **Website** www.daesoohitech.com

**Address** #404 BI Center, KAERI 111, Daedeok-daero 989 beon-gil, Yuseong-gu, Daejeon, Korea

### ➤ INTRODUCTION

Daesoo Hi-Tech Co.,Ltd is professional company, specialized in environmental new material, nano technology. We have developed and produced functional coating solutions with the aim of improving pleasant and clean indoor and outdoor environment. We will always strive to grow as a reliable company under our corporate spirit of 'Respecting people and the environment.

- 1) Research and development of environmental new material nano technology.
- 2) Development of antibacterial deodorant for daily life.
- 3) Development of super hydrophilic coating solution for daily life.
- 4) Development of industrial nanotechnology catalyst.
- 5) Coating solution to prevent adsorption of pollutant and discoloration.



## L4 DREAMCHEF CO., LTD.



**Contact** KimSubin/ General Director **Tel** +84-902394702

**Mail** dreamchefvn@dreamchef.kr **Website** www.dreamchef.kr

**Address** 98, Jeolgol-ro, Tongjin-eup, Gimpo-si, Gyeonggi-do, South Korea

### ➤ INTRODUCTION

Manufacturer of Pots and pans. We have our own brands and also do OEM



## L5 ESSER

ESSER

**Contact** SuhLynnsong **Tel** +82-10-3327-6171

**Mail** esserpp@naver.com **Website** esser.co.kr

**Address** 707,43, Yangsan-ro, Yeongdeungpo-gu, Seoul, Republic of Korea

### > INTRODUCTION

We are leading the best in marketing and sales, also set the trend in the distribution market based on marketing techniques and know-how through more than decade. Our mission is to identify consumer needs and encourage them to make smart consumption. We will never stop to develop quality and communicated with consumers to become a consumer-familiar company.



## L6 FIFTH ENERGY CO.,LTD



**Contact** Jeon, Baik Ryeol **Tel** +82-10-7705-5895

**Mail** fifthenergy\_1@outlook.kr **Website** http://fifthenergy.co.kr

**Address** Samsung LEADERS Tower #705, Beotkkot-ro, Geumcheon-gu, Seoul, Korea

### > INTRODUCTION

FIFTH ENERGY CO.,LTD.was established in 2018 and we are developing green energy products in many fields such as electronic heating grills, HVAC parts, etc. We will overcome the environmental and health issues with flexible and agile strategy for the better life and planet. "YECHEF" is smart electronic grill of 'active heating unit' with the cutting edge tech initiated by statistical thermodynamics laboratory. The essence of innovation is, meat is not burnt with great flavor(b/w 180-200 ), and completely remove cooking fume and risk of fire. VENTILATION tools are not needed. only 34mm volume-height.



## L7 HANIL ELECTRIC CO.,LTD.



<b>Contact</b>	Lee Yunjung / Manager	<b>Tel</b>	+82-2-2630-1792
<b>Mail</b>	trade@hanilelec.kr	<b>Website</b>	http://www.hanilelec.co.kr/Web/?Int=ENG
<b>Address</b>	10, Usangongdan-gil, Wonju-si, Gangwond-do, Korea		

### > INTRODUCTION

Founded in 1964, Hanil Electric Group Co., Ltd. has been steadfastly leading the Korean pump industry with its outstanding technical power and creativity; it continues to release its new products not only in the pump sector but in a wide variety of household / baby care appliance sectors as well. We are dedicated to implementing aggressive R&D and securing competitiveness in technology and carrying out rigorous quality management to help maintain the high reliability and quality of our products. We're manufacturing these products at our own factory in Korea and export to Indonesia, Middle East, Southeast Asia, Japan, China, USA and Europe.



## L8 YGPLUS



<b>Contact</b>	Chang Hyun Kim	<b>Tel</b>	+82-2-3140-4600
<b>Mail</b>		<b>Website</b>	www.ygplus.com
<b>Address</b>			

### > INTRODUCTION

#### YG Artist MD Products

YG PLUS established to develop new business in lifestyle area such as merchandising, advertisement, music business, cosmetics, golf, and F&B based on YG culture combined with creative content.

- Winner, Blackpink, Icon etc. fan products
- Artist T-shirts combined artist IP
- KRUNK MD Products





## L9 INSUNG CO., LTD



**Contact** JIN, SANGHUN/MD

**Tel** +82-10- 8780-2172

**Mail** shjin@insungsystem.net

**Website** www.insungsystem.net

**Address** Chunui Technopark 101-1507, Bucheon-ro 198beun-gil 36, Bucheon-si 14556 Republic of Korea

### > INTRODUCTION

INSUNG Co., Ltd is a company that production and sells infrared thermal imaging cameras and day/night surveillance system. The main purpose of the surveillance system is to monitoring the front of coastal, border, and the patrol ships by using infrared thermal imaging camera. Thermal cameras are installed in areas of high risk of fire and are used to monitoring temperature and fire. The main customers are the Army, Navy, Air Force, Police, Coast guard, Air port, Government agencies, ships, Oil & Gas, petrochemical plants



## L10 KODAECS CO.,LTD.

**HULOCK®**

**Contact** MINHAN KIM / Manager

**Tel** +82-10-5514-0078

**Mail** mhkim@kodaecs.com

**Website** www.hulock.co

**Address** 3-1, Jangpyeong-ro, 15beon-gil, Saha-gu, Busan, Korea

### > INTRODUCTION

KODAECS Co., Ltd., once a small auto part company founded in 1998, started developing new innovative airtight food storage containers for fresher and tastier food in 2014. It has successfully obtained patents, utility models, design patents, international certificates and now becomes the airtight food storage container market leader with innovative ideas and technology. We, KODAECS Co., Ltd, promise tooffer even better and more kitchen appliance choices and become the most reliable brand everyone knows and trusts. Hulock, the kitchen appliance brand of KODAECS Co., Ltd, will protect your kitchen for heathier and happier life.





## L11 KODO GLOBAL SOLUTION



<b>Contact</b>	KO DOKYEONG	<b>Tel</b>	china +86-13957140703 korea +82-10-5252-8311
<b>Mail</b>	kodochina@kodo.kr	<b>Website</b>	instagram - banhada.mapo
<b>Address</b>	99, Tojeong-ro, Mapo-gu, Seoul, Republic of Korea		

### ➤ INTRODUCTION

KODO Global Solution Company (Korea mother company)supports overseas subsidiaries with stable manufacturing, production, and quality control. Based on its 16-year network and experience in the region, the Chinese company (杭州高亿度贸易有限公司)is strategically marketing the Chinese and ASEAN markets

With the company's ideology of "more healthy and more beautiful life," we hope to become healthy and beautiful through constant product development.



## L12 KOMAX INDUSTRIAL CO.,LTD.



<b>Contact</b>	Choi, Kyeong-Hoon/GM	<b>Tel</b>	+82-10-5369-5190
<b>Mail</b>	khchoi@ikomax.com	<b>Website</b>	www.ikomax.co.kr
<b>Address</b>	KOMAX INDUSTRIAL CO., LTD. 10F, WOOLIM LIONS VALLEY-B, GASAN DIGITAL 1-RO, 168, GUMCHEON-GU, SEOUL, 08507 KOREA		

### ➤ INTRODUCTION

Komax has founded in 1971 as a manufacturer of kitchenware and household goods, and it is loved as Korea's best kitchenware brand through excellent design. We have four main categories such as airtight containers (BioKips, HiKips, BB Lock, GlassLook, Bioglass, OvenGlass, IceGlass), water bottles (Tritan material, PET and PP material bottles, for portable/ table setting), and Plastic cutting boards (household/ commercial use). HQ(Seoul) and factories(Hwasung, Dangjin) are located on three(3) individual sites in Korea to do production and logistics. All products are delivered to various domestic sales channels on time. and To more over 30 countries, we export our products with deep pride of Made in Korea.



## L13 KORSIAM

## kustom plastic

**Contact** MINWOO PARK / CEO

**Tel** +82-10-3390-5096

**Mail** kustomplastic@gmail.com

**Website** kustomplastic.com

**Address** B-202, 39, Jibong-ro 143beon-gil, Bucheon-si, Gyeonggi-do, Republic of Korea

### > INTRODUCTION

kustom plastic is a brand that makes a practical product with a simple design by using a plastic material. We are designing robust, space-friendly products with an uncomplicated structure.



## L14 NARA SYSTEMS CO.,LTD

**NARA** 나라시스템즈(주)  
SYSTEMS CO.,LTD.

**Contact** Edward Suh

**Tel** +82-10-4851-0001

**Mail** fire0102@firenara.co.kr

**Website** www.power-punch.com

**Address** 8F, Samwhan B/D, 11, Jaseong-ro 141 beon-gil, Dong-gu, BUSAN, KOREA (48742)

### > INTRODUCTION

In 1998, our company developed the world's first "portable fire extinguishing tool" without safety pin. We have also developed innovative products that can be used by children, the elderly and women as well as the disabled. Our company was awarded the prize of the Ministry of Commerce, Industry and Energy for the Patent Technology Award after the 41st Trade Day Export Award and the Prime Minister Award. We exported \$ 2.5 million through Japan Home Shopping. Existing fire extinguishers require replacement, inspection, and recharging every year, and there were difficulties such as economic loss that a lot of fire extinguishing chemicals were discharged by one use, inconvenience to the surrounding environment, inconvenience to pick up safety pin. However, our company complements the weaknesses of these existing fire extinguishers and developed them to be safe from -30 degrees to 80 degrees. The fire extinguishing agent of our products is not hardened, it is safe for use in automobiles and it has a validity period of 8 years. It is most surprising that victims of the fire, such as the elderly, women, and the disabled, are easy and convenient to use. Our products are a breakthrough public service product. We exported 500,000 products through Japan Home Shopping.



**Contact** James Yoon/Director **Tel** +82-10-2430-0098

**Mail** goodsolidair@gmail.com **Website** www.i-nnm.com

**Address** 5-dong 3F, 20 Techno 1-ro, Yuseong-gu, Daejeon South Korea

### INTRODUCTION

Natural and Me Co., develops idea products that improve the inconvenience of life and is a technology-intensive company specializing in Air Freshener, Multi-purpose deodorant Dehumidifier producing and selling only eco-friendly products. Natural and Me Co. seeks newness from the perspective of customers, creative ideas, and thorough after-care to enhance customer satisfaction.



**Contact** Min-Ho, BYEON **Tel** +82-10-2968-0383

**Mail** newwrap86@naver.com **Website** http://www.newwrap.co.kr/en/

**Address** 548-66, Daepyeong-ro, Daewol-myeon, Icheon-si, Gyeonggi-do, Republic of Korea

### INTRODUCTION

New Wrap is only handling green products for pleasant life and convenient. New Wrap is making Eco-Friendly life culture on food package field, Produce and supply green products that carefully selected based on high brand image of 'New Wrap' and product quality. Also, we do our best on endless research and development. We promise to offer best quality and lowest price products to customers by continuous successful strategy alliance with major distributors in domestic.



## L17 PETIT ELIN



**Contact** Han SeHyun / Manager

**Tel** +82-70-8740-2276

**Mail** codyhan@petitelin.com

**Website** <http://www.petitelinstore.com/>

**Address** Petit Elin Co.,Ltd. 13F (7th Daerung post tower, Guro\_dong) 48, Digital-ro 33-gil, Guro\_gu, Seoul, Korea

### ➤ INTRODUCTION

PETIT ELIN, meaning by little happiness, founded in 2010 under the principle of only place the premium products of our adorable children first in everything that we do.

As a child premium specialized company, PETIT ELIN only introduces the premium brand which can be assured the honest, superior quality and design



## L18 PN POONGNYUN



**Contact** Jeff Lee /Manager

**Tel** +82-2-2008-1030

**Mail** jefflee@pn.co.kr

**Website** <http://www.pn.co.kr/index.do>

**Address** Esco B/D 4F, 7, Teheran-ro 7-gil, Gangnam-gu, Seoul, 06134, Republic of Korea  
(Head office 620, Byeolmang-ro, Danwon-gu, Ansan-si, Gyeonggi-do, 15613, Republic of Korea)

### ➤ INTRODUCTION

PN wish to be there for you as a friendly neighbor PN POONGNYUN Co.,Ltd is a kitchenware company which has kept its tradition based on craftsmanship since it was established in 1954.

With its strict quality and production management system, 'POONGNYUN Pressure Cooker' which is the representative product of PN POONGNYUN maintains the top position in Korea.

PN is committed to the global distribution of its leading products, with exports to Southeast Asia, Japan, China, the United States, South America, Middle East, and Europe.





## L19 REMANN, INC.



**Contact** (Ms.) DARAE CHEONG  
/Sales Assistant Manager

**Tel** +82-10-6526-6106

**Mail** kiwi@remann.co.kr

**Website** www.remann.co.kr  
foreign.remann.co.kr

**Address** 2975-23, Geumgang-ro, Naecheon-myeon, Pocheon-si, Gyeonggi-do, South Korea

### ➤ INTRODUCTION

REMANn has two main businesses.

First business is to source Korea's competitive IT projects directly and provide to major ASEAN countries such as Thailand and Vietnam in the form of exclusive distributor and provide necessary services for export/import services. In this KBEE exhibition, we will show and provide enterprise monitors (gaming, graphic, video) and variety of products of gaming gears and furnitures in the future.

Our second business specializes in the maintenance of enterprise IT equipment (computers, laptops, servers, networks, etc.) and the disposal of digital information security.

REMANn is an official partner of Microsoft and our main clients are Korean government, local government, multi-national companies, etc. In the future, we will introduce and launch a variety of smart IT products into the global market.



## L20 SUPREME MERCHANT CO., LTD.



**Contact** JUNG HYE LAN / Manager

**Tel** +82-10-8922-8973

**Mail** jung@smgmall.com

**Website** www.smgmall.com

**Address** 4F, DaeWon B/D, 11, Seolleung-ro 131-gil, Gangnam-gu, Seoul, Korea

### ➤ INTRODUCTION

SMG is a total distribution company equipped well organized network, man-power and system.

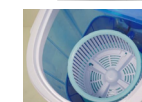
We have been sourcing nice product & service with catching the needs of consumers from all over the world and distributing to in whole of Korea with variety way including on-off market with having nice reputation since established in 2007.



Good company, Good product!

### ALPHA LOCK Washing Machine

- 1. Mini washing machine**  
- Wash, Rinse and Spin
- 2. Save time**  
- Wash a small amount of laundry quickly.
- 3. Space Saving**  
- Easy to store in 1/3 size of existing washing machine
- 4. Convenient hose installation.**
- 5. Economical laundry**  
- Reducing electricity, water and detergent.



PRODUCT INFORMATION		SHIPPING SPECIFICATION	
PRODUCT CODE :	SMG-1000	CARTON SIZE :	35 X 35 X 50 cm
SIZE/WEIGHT :	35 X 35 X 50 cm / 4.17kg	MOQ :	1000pcs
INCLUDING :	Washing Machine 1pcs, Spin Bucket 1pcs	CONTAINER QUANTITIES :	1000pcs/40HQ
VIDEO FORMAT :	Plate 1 pcs	DELIVERY TIME :	20days
HS CODE :	8450.19	FOB PORT :	FOB NINGBO

SUPREME MERCHANT, 4F, 11, Seolleung-ro 131-gil, Gangnam-gu, Seoul, Korea (06060)  
Tel: +82-2-6085-5915 Fax: +82-2-6085-5917 Email: jung@smgmall.com  
www.smgmall.com



**Contact** Kim,Si-jong / director

**Tel** +82-10-3158-8505

**Mail** ksjong17@naver.com

**Website** <https://www.genoplan.com/kr>

**Address** 161-8, Magokjungang-ro, Gangseo-gu, Seoul, Republic of Korea DOOSAN the landpark704

## ➤ INTRODUCTION

YellowMedi is a company that sells dental materials.

And provide various information and education related to dentistry.

We sell & promote Genoplan Korea's Genetic Testing Kit.



## K-Content



## K1 SKONEC ENTERTAINMENT CO., LTD.

**Contact** Nari Lee/Manager **Tel** +82-10-8576-0143

**Mail** leenari@skonec.com **Website** <http://www.skonec.com/eng>

**Address** 9F Chosun-naehwa B/D, 577, Seolleung-ro, Gangnam-gu, Seoul 06143 Korea

### ➤ INTRODUCTION

SKonec Entertainment is a leading VR company, who successfully launched the world's first VR gun-shooter game. Today, we are engaged in an all-round fields of VR industries, working tirelessly, to bring you the best service and experience. We are specialized in VR contents development and a leading Location-Based VR Entertainment solution provider.

#### [Core Business]

- 1) VR LBE (Location-Based Entertainment) Business
  - VR Square / Location-Based VR Entertainment solutions
- 2) Convergence VR contents Development Business
  - B2B and B2G Contents Development Business
- 3) Consumer VR contents Development Business
  - Consumer targeted Contents Development and Service

#### \* VR SQUARE (VR Theme Park)

VR SQUARE provides Premium LBE (Location Based Entertainment) VR Contents with Five distinguished platforms. To help creating your Youth & Fun place with the total solution of VR entertainment.

- 1) VR Walking Attraction (premium VR free-roam gaming)
- 2) VR Battle Arena (best multiplayer PvP / E-Sports)
- 3) Escape Room VR (solving puzzles to escape room with the greater of impressiveness)
- 4) Party Room (selections of the best-hit VR games on Vive platform in a room-scale)
- 5) VR Arcades (mechanical motion-based / arcade VR attractions)



## K2 LIVE K

**LIVE K**  
Convergence Contents Leader

**Contact** CHO NAMKWON / CEO **Tel** +82-10-8800-8199

**Mail** chonpartners@gmail.com **Website** [www.livekshow.com](http://www.livekshow.com)

**Address** #404, ICT Center, 815 Daewang pangyoro, Sujeonggu Sunghnam city, Gyeonggi-do, Republic of Korea

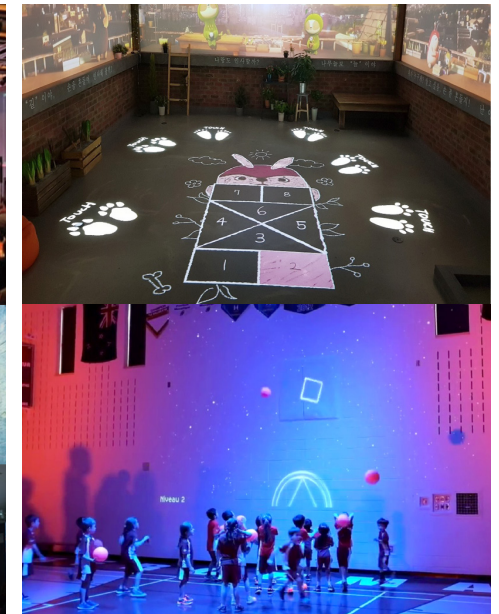
### ➤ INTRODUCTION

LIVE K has produced a variety of contents specialized in Hologram, Media Art, and Interactive Art technologies, and is focusing on the interactive showpark business in MR form by utilizing these media technologies. Recent trends regarding the deployment of Immersive space are changing to MR (AR+Interaction) that fills void space with media façade and projection mapping base rather than VR device. It also enhances interaction through users (objectors), media and sensors by utilizing IPs of contents such as characters or games.

#### INTERACTIVE MEDIA ART



#### PLAY M



## K3 MAMMOSSIX CO.,LTD.



**Contact** Charles Yoo/CEO **Tel** +82-10-9258-2870

**Mail** charlesyoo@mammo6.com **Website** www.mammo6.com

**Address** 51, Hoam-ro, Buk-gu, Daegu, Republic of Korea

### > INTRODUCTION

Mammo6 is a VR content developer. We have developed three titles, the company has serviced content to 7 global markets and 202 locations worldwide in 120 countries. 'Galaxy' is a virtual reality platform that enjoys various entertainment in multiple access space built in city form.



## K4 SMARTHAN CO., LTD.



**Contact** CHONG EUNJIN / Team Leader **Tel** +82-10-4806-8303

**Mail** eunjin@smart-han.co.kr **Website** www.smart-han.com

**Address** 13449) 818, Business Growth Center 54, Changeop-ro, Sujeong-gu, Gyeonggi-do, Korea

### > INTRODUCTION

#### SMART THINKING BRINGS YOUR IMAGINATION TO LIFE

At Smarthan, our goal is to "provide educational digital content by implementing Augmented Reality (AR) & Virtual Reality (VR) technology to create an emotional and educational platform for people worldwide to learn and share. We provide educational content using storytelling a format that focuses on storytelling style that enables communication by breaking all barriers between languages, generations and emotions.





**Contact** CHOI JIN SUNG / CEO

**Tel** +82-10-5000-0637

**Mail** ceo@c2monster.com

**Website** www.c2monster.com / www.wormholepipeline.com

**Address** #1010 Daerung Post Tower 7 Cha, 170-10, Guro-Dong, Guro-Gu, Seoul, Korea

### ➤ INTRODUCTION

C2Monster has been working in distribution, education and technical support fields of CG industry for the past 10 years. After gaining such useful experience, C2Monster has dived into the international digital contents and ICT convergence fields, ranging from technical support to contents development and production. C2Monster aims at building an enterprise where people and organizations are well integrated by a sustainable and efficient technology development.

- 'Wormhole 2'** is a Software Solution that is developed for Production Pipeline Management in Digital Content Productions. It provides Collaborative-Remote-Production-Environment along with Digital Asset Stores for an efficient use of asset library.
- '3D Storyboard'** is a publication software that is designed for any users who desires to deliver their ideas in to 3D/2D media form. There is one feature of 3D Storyboard. Which users can just drag & drop default 2D or 3D asset library into the App. And users can select dynamic poses. In addition, it allows users to add-in their drawings.
- 'VR Space'** lets users set their own VR environments and freely create content without any special skills.
- 'Blackhole 3D'** enables users to view and arrange Maya and Max 3D assets without having to individually open files. Arranged 3D assets can be viewed at any time and place through a web browser via a 3D Viewer that supports 360° viewing.



## K-Service

## S1 WORLD VERTEX CORP



**Contact** Taejong Kim / CEO **Tel** +82-10-3247-7159

**Mail** ceo@vtex.co.kr **Website** <http://www.vtex.co.kr>

**Address** ACE bldg 401, 179, Baumor-ro, Seocho-gu, Seoul, Korea

### ➤ INTRODUCTION

World Vertex corp is an Artificial Intelligence-Based Education Solution and Service Company that has Object Recognition, Natural Learning Recognition, Mathematical Recognition, Problem Bank, and LMS Solution



## S2 T-IME Education



**Contact** Jayme J. Brown/Assistant Manager **Tel** +82-10-2429-5263

**Mail** jayme.brown@t-ime.com **Website** [www.t-ime.com](http://www.t-ime.com)

**Address** 5F Peugeot Biz Tower 310, Gwangnaru-ro, Seongdong-gu, Seoul, Korea

### ➤ INTRODUCTION

We lead students to understand their learning goals in a long term program with an educational model that integrates multimedia learning and offline classes. We are not a Korean Company developing contents that simply follow global standards. At T-IME we are guided by world education to build our business. At present, in 2019, we have grown to employ more than 400 in our offices, including researchers and developers, 4,500 teachers for over 160,000 students, and possess virtually the best national specialty education business. In addition, we have 180 special IT advanced technology and skills researchers developing educational contents not for only one-sided traditional education, but for student and teacher/student to student discussion and learning using a our new experimental paradigm of real-life learning that is changing the education industry. We are currently exporting our products in China, Japan, Taiwan, HongKong, Philippines, Singapore, Malaysia, and Egypt! We hope to expand globally!



S3

## CHUNGDAHM LEARNING

CHUNG DAHM Learning

**Contact** Daniel Choi / General Manager **Tel** +82-2-3429-9509

**Mail** dychoi@chungdahm.com **Website** <http://future.chungdahm.com/eng>

**Address** 15F, Shinyoung Bldg., 68-5, Cheongdam-dong, Gangnam-gu, Seoul, Korea 06072

### > INTRODUCTION

CHUNGDAHM Learning is an education service company with premium brands for K-12 students: Chungdahm Institute, April Institute, and i-Garten. Each offers its own distinctive curriculum, which is developed in-house and integrated with Smart Learning solutions to cultivate 21st century talents in the age of digitalization and globalization. Globally, CDL's ESL thinking content and Smart Classroom solution have opened up doors to countries far beyond Asia. In addition, CMS Edu, a subsidiary of CDL, has dominated the Korean STEM market with its creativity-based math program, and now is shifting its vision to the global market.



S4

## DARAKWON

 DARAKWON

**Contact** Lee Dongho /Executive Director **Tel** +82-10-2549-9147

**Mail** dongho1967@gmail.com **Website** <http://www.co.kr>

**Address** 64-1, Jandari-ro, Mapo-gu, Seoul 04031 Republic of KOREA

### > INTRODUCTION

DARAKWON is a leading Korean publisher specializing in English, Japanese, Chinese, and Korean learning materials. Darakwon has published more than 3,000 foreign language titles, including 100 Korean books, popular with foreigners who want to learn Korean. Over 500 e-learning lectures have been developed and offered to employees in major corporations.



## S5 iPortfolio Inc.

iPortfolio

**Contact** Jonghwan Lee / Executive VP **Tel** +82-10-6255-3673  
**Mail** contact@iportfolio.co.kr **Website** https://iportfolio.co.kr/  
**Address** 11F, 24 Namdaemun-ro 9-gil, Jung-gu, Seoul 04522, Korea

### > INTRODUCTION

iPortfolio aims to transform the way people learn and teach English. iPortfolio envisions to disrupt the global ELT (English Language Teaching) market affecting over 1 billion people around the world learning English as a foreign language. So we provide "Spindle Books™", the full suite of solutions for a complete e-Textbook based learning environment. Spindle Books stems from patented technology that transforms the print books into smart digital books that provides value added features without compromising the fidelity of paper books.

- (1) Solution Business : Provisioning of White-labeled e-Reading Platform, SaaS of SAT(Spindle Authoring Tool)
- (2) Service Business : Partnership-based English e-Reading Services in Korea, China and Japan



## S6 JH EDUCONN CO.,LTD. (JHEC)

**JHEC**  
 메이메이저교육권 주식회사

**Contact** Seongwook Yang/Director **Tel** +82-10-3107-0083  
**Mail** goirgio@nate.com **Website**  
**Address** 292 Dongho-ro, Jung-gu, Seoul, 04617

### > INTRODUCTION

JH EDUCONN is a leading EduTech start-up company in Korea and reaches forward a new way of teaching and learning. JH EDUCONN MAKES EDUCATION + TECH MEET MOBILE FOR YOUNG KIDS. JHEC develop 'Smart robot Albert' electronic robotics kits for KG to G6. This robot is robotics education tools using bluetooth connected smartphone and it engages young children in games to design and execute programs which control the robot's movement



## S7 LUXROBO Co., Ltd.



**Contact** Hansung Kang / Director **Tel** +82-10-2288-0105

**Mail** cco.hskang@luxrobo.com **Website** www.luxrobo.com

**Address** 13F, 311, Gangnam-daero, Seocho-gu, Seoul, Republic of Korea

### > INTRODUCTION

MODI is a modular HW platform. Each MODI module comes with MODI micro OS embedded and has its own specific function. A total of 13 modules are divided into three categories, input, output and setup. By combining the modules freely and doing a bit of coding, a user can create an IoT, robots or other electronic devices. With its own graphic coding tool, MODI Studio, a user can program how the modules work together. It truly is the easiest way to learn robots and IoT.



## S8 puzzlia



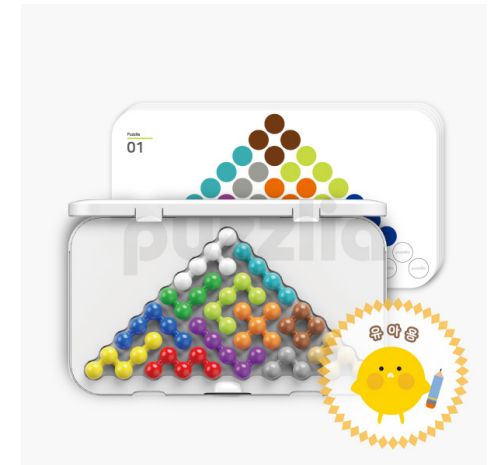
**Contact** Nam Heon, Paik/CEO **Tel** +82-10-4323-4072

**Mail** captain35@hanmail.net **Website** www.puzzlia.co.kr

**Address** 17, Chengdu-got 8gil, Seocho-gu, Seoul, Korea

### > INTRODUCTION

Puzzlia is a company that not only developing educational products and game but distributing those kinds of products to the global. We are selling some kind of puzzles and educational books. Since 2002, we have been convinced to help educational industry and placed as remarkable company in Korea. We believe that the future of education should aim to be improving Children's creativities and logical thinking. We been doing this project for 10 years.Hope to enjoy this shop.





S9

## VISANG EDUCATION, INC.



Contact	Luke Robson	Tel	+82-10-6474-9724
Mail	Luke@visang.com	Website	<a href="http://www.visang.com/pageLoad?page_id=/en/main">http://www.visang.com/pageLoad?page_id=/en/main</a>
Address	Daeryung Post Tower VII 20F, 48, Digitalro-33-gil, Guro-gu, Seoul, Korea 08377		

### > INTRODUCTION

Since 1997, Visang Education has grown into an elite provider of content ranging from textbooks and learning aids to online education and teacher support. Now, Visang is focused on building low-cost, high-efficiency “smart-learning” environments where students can enjoy self-motivated English language learning. We couple our focus on the students with training for administration, teachers, and parents so that all parties can enjoy the full capacity of ever-evolving educational technology.

